



### Description

Enclosures for controllers made of heavy-duty ABS plastic with the possibility of installing PCBs and fixing them to DIN-rail.

### Features

Length, mm: 120

Width, mm: 94

Height, mm: 52

Material: ABS

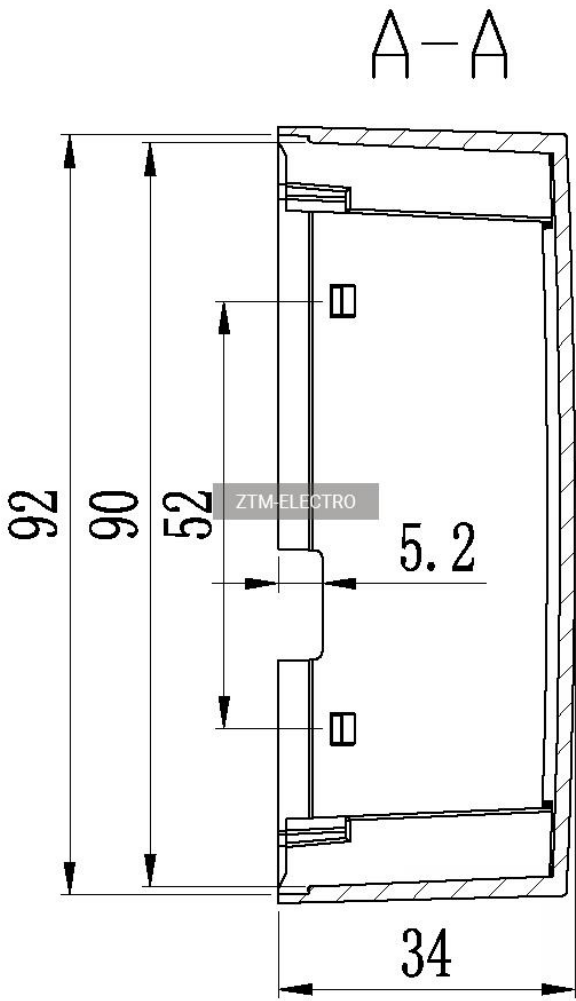
Good heat dissipation: Yes

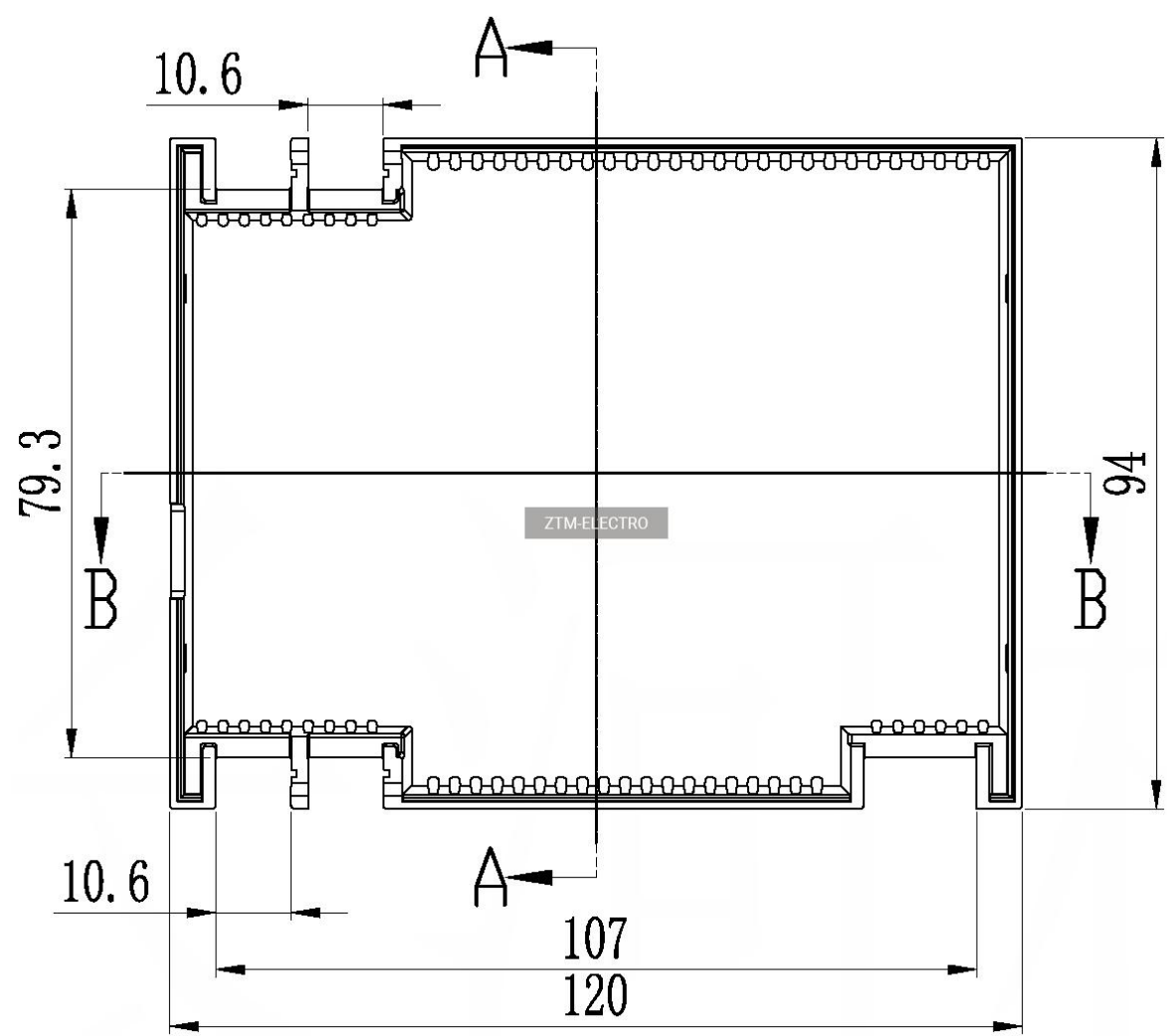
PCB mounting: Yes

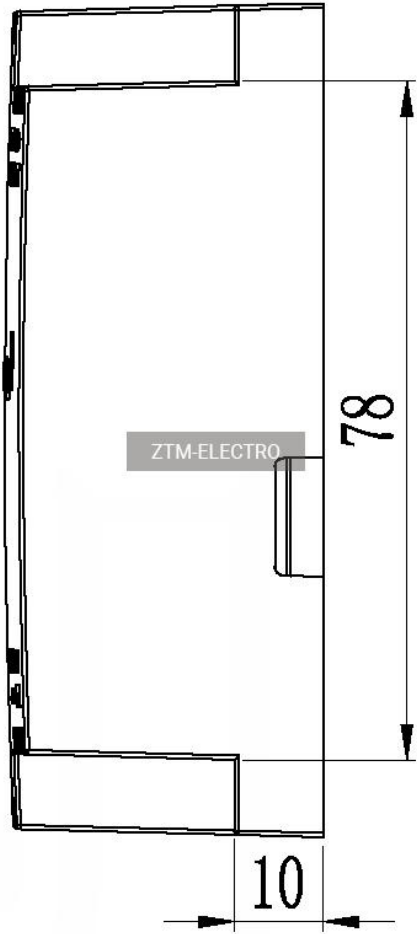
Fixing the enclosure on a DIN rail: Yes

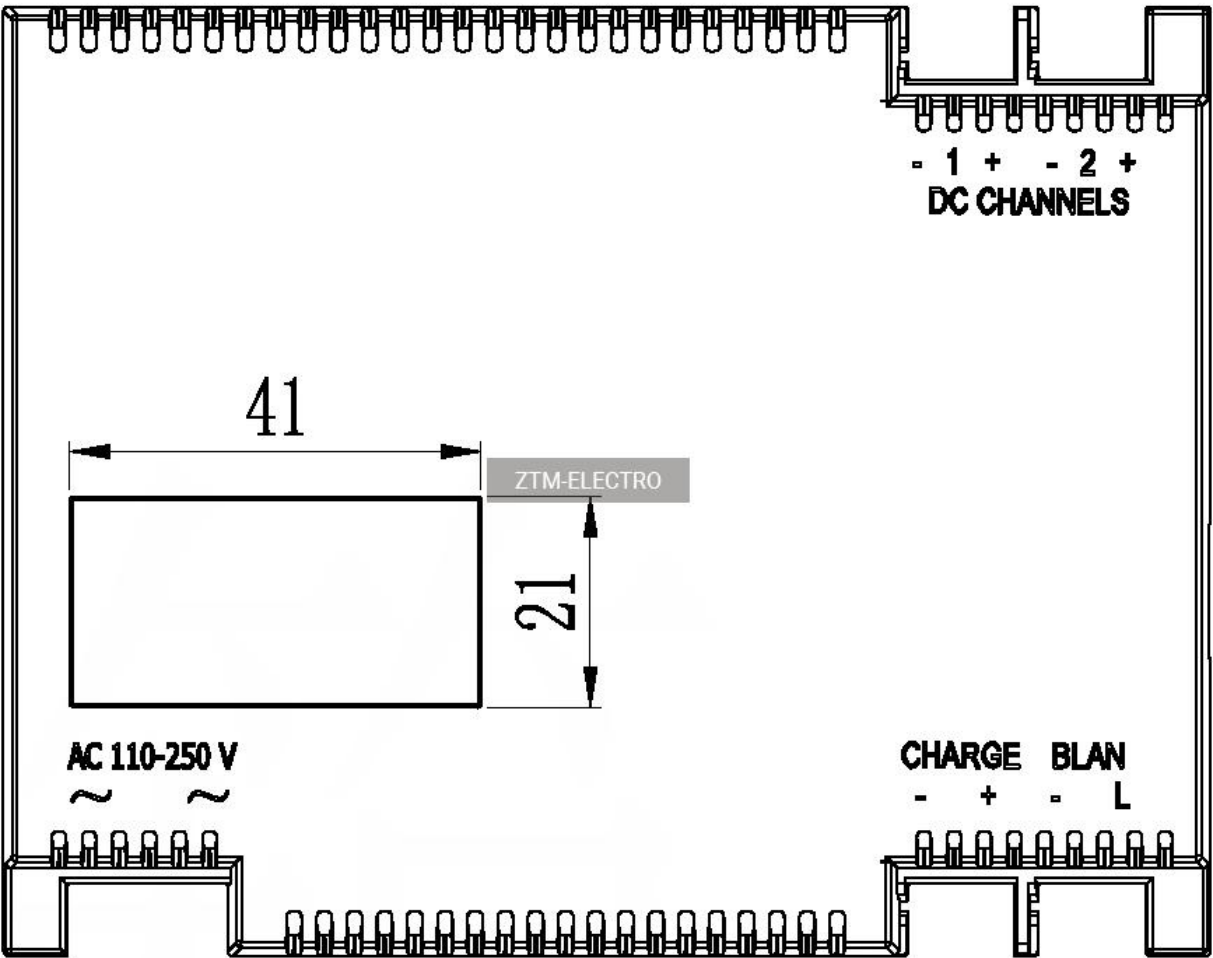
Screwless assembly: Yes

Draw









B-B

